

# Health & Environmental Protection Annual Report 2016/17

Lorraine Chamberlin - Head of Health and Environmental Protection  
&  
Anne Whittington - Public Health Specialty Registrar

# INFECTION PREVENTION AND CONTROL

Infection prevention and control involves working to prevent and control the spread of infection among the population. Communicable diseases are diseases that you can "catch" from someone or something else, often via airborne viruses or bacteria, but also through bodily fluids or contact with contaminated objects in the environment.

## Infection and Prevention Control Audits



**75%**

Care homes scoring green from audits and re-audits Aug 2015-Mar 2017

None scored **Red**



None scored **Red**  
Of the GP Practices audited

Work being undertaken to raise awareness and reduce Antibiotic prescribing by **50%** by **2021**



**38** number of disease outbreaks that the Infection Prevention and Control team helped to manage



## Key Points

**MRSA**  
(Meticillin-Resistant Staphylococcus Aureus)

Infections lower than national rates - 0 for Bury in 2016/17

Launch of monitoring in 2017/18, consideration needed going forward

**MMR**  
(Measles Mumps and Rubella)

Uptake rates are good over 95% for 1 dose by 5 years old, and are comparable or better than the national average

Good uptake when compared against regional and national uptake, plans to ensure this continues

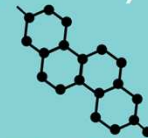
**DTaP/IPV/Hib (5-in-1)**

(Diphtheria, Tetanus, acellular Pertussis /Inactivated Polio Virus /Haemophilus influenzae type b)

Uptake rates are good over 95% at 2 years old, and are comparable or better than the national average



**E.coli**  
(Escherichia coli)



**FLU**  
(influenza)



Focus group research conducted in Bury around pre-school vaccine - Informing methods to increase uptake



Created by: Performance & Intelligence, Bury Council

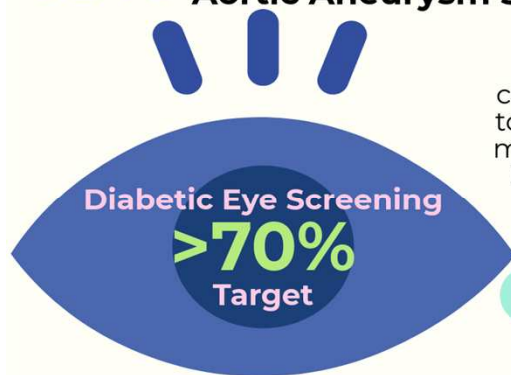
# SCREENING AND SEXUALLY TRANSMITTED INFECTIONS

Screening is a process of identifying apparently healthy people who may be at increased risk of a disease or condition, or in asymptomatic early stages of the condition. In England there is a range of screening programmes and these can lead to a reduction in late diagnosis and preventable deaths.

Sexual health is an issue that concerns the majority of the population. Good surveillance of trends in key measures of sexual health, such as rates of sexually transmitted infections (STIs) are a good measure of a comprehensive and high-quality sexual healthcare service, health promotion and educational opportunities achieved.

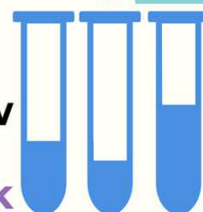


**79%** Coverage for - Abdominal Aortic Aneurysm Screening



**FREE STI home testing kits now available in Bury via:**  
[www.thesexualhealthhub.co.uk](http://www.thesexualhealthhub.co.uk)

Bowel cancer screening toolkits are being made available to Bury Residents and development of a social movement of cancer champions



**96%** Uptake of HIV testing among men who have sex with men



## Key Points

### Screening

Bury is above regional and national averages for cancer screening programmes



Although coverage is above national averages for Cervical Screening, work to be done moving forward to achieve 80% target.

### STI's

HIV late diagnosis has reduced significantly in recent years and is now below national levels



Bury will be taking part in the national HIV PrEP trial

Bury public health are to organise stakeholders to complete a Chlamydia Care Pathway Review with PHE North West colleagues, to increase screening rates.



powered by

**PIKTOCHART**

Created by: Performance & Intelligence, Bury Council



# ENVIRONMENTAL PROTECTION & EMERGENCY PLANNING

We have an integrated Environmental Health and Health protection team comprising EHO's, Nurses and Enforcement officers unique in GM. The complementary skills provide greater resilience in emergencies, particularly for outbreak control.



1700 Year 6 children were given **litter and dog fouling talks** as part of the 'Crucial Crew' initiative

## Environmental Health Officers (EHO's)

- Planning application consultancy provided on:
  - 265 general environmental health issues
  - 209 contaminated land issues
- Provided support to neighbourhood working



**12 private water supply premises audited to ensure safe water**

**Risk assessments carried out for:**



- Severe weather
- Pandemic Influenza
- Emerging infectious diseases
- Environmental hazards



**4**  
Multi agency training exercises completed



emergency plans reviewed or produced

## Key findings



Pest control **over-achieved** their income target by over **£51,000**. This is through improved efficiency, and new contracts gained



Bury achieved a **22% reduction** in carbon emissions from 2008/9



**2492** requests for services dealt with covering various areas including noise nuisance, fly-tipping etc.

**493 legal notices** and **28 fixed penalties notices** were served for various Environmental Enforcement offences, with **2 successful prosecutions**



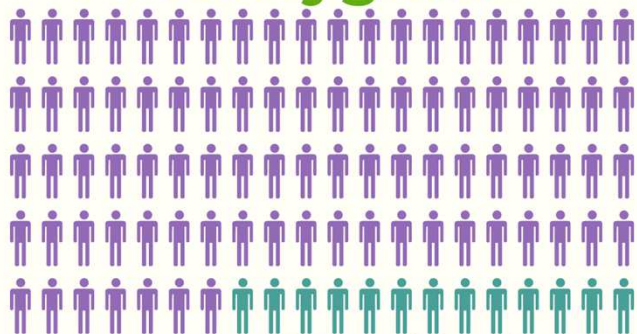
Created by: Performance & Intelligence, Bury Council All data correct as at January 2018

# FOOD HYGIENE, HEALTH & SAFETY AT WORK & AIR QUALITY

Bury Council's health and safety regulators are required by law to make adequate arrangements for enforcement. The council is required to evidence that it can deliver high quality investigations and enforcement work. The food safety annual inspection programme is designed to give consumers in Bury confidence that food produced and sold in Bury is safe to eat.

Air quality is the largest environmental health risk to public health in the UK, with more than 2000 people in GM dying prematurely as a result of poor air quality.

## Food Hygiene



**87%** of registered food premises in Bury are broadly compliant with food hygiene requirements

## Inspections

- 450 inspections carried out in 2016/17
  - 178 written warnings issued
  - 3 voluntary closures of food premises
- 24 food complaints dealt with
- 68% of food premises in Bury were awarded a top score of 5 on the Food Hygiene rating scheme
- Only 5% scored a rating of 2 or less



## Air Quality

The fraction of mortality attributable to air pollution in Bury is 4.1 - below the North West and national average



270 reports dealt with from developers on Air Quality and contaminated land



The rate of carbon emissions from domestic properties, Business and Transport are lower in Bury than GM



46 Environmental Permit sites inspected and risk assessed

20 variation notices issued for permitted processes to prevent air pollution



## Health & Safety at work



49 Health and safety inspections carried out and 52 workplace accidents investigated

**1294**

service requests on commercial premises dealt with

Created by: Performance & Intelligence, Bury Council

powered by

**PIKTOCHART**

**Any questions?**